

## TREAT 3.3.0 Release Notes

---

<http://psdconsulting.com/software/treat/>

### New Features:

#### Surfaces

- Deprecated existing commercial wall types. If you have used these wall types your TPG will continue to work but you will not be able to add new surfaces of these types
- New commercial surfaces replace the deprecated surfaces. The new surfaces have better descriptions and constructions are taken from ASHRAE 2009 HOF.
- The surface library window search has been improved to make finding surfaces easier.

#### Calculation Changes

- TREAT now passes RESNET DHW and HERS distribution system efficiency tests

#### Solar DHW Support

- Collect Solar DHW contribution for base building
- New 'Renewable Energy' improvement supports adding solar DHW equipment to a package

#### Workscope Library

- Improvement workscope are now taken from a user editable library of workscope descriptions.

#### Reports System

- Export to MS Word format
- Additional Report Templates
- Registration and Activation
- Streamlined activation and upgrade process

#### Billing Data Analysis

- Billing data may be compared to a fixed 65° reference instead of reference from model

### Changes you may need to know regarding releases since 3.2.5:

#### Licensing and Activation

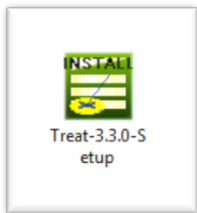
When you first install TREAT 3.3 on a machine TREAT will run in demo mode. If your license is still eligible for support you can activate TREAT 3.3 by choosing 'Register Treat' from the 'Registration' menu and selecting the 'Activate Upgrades' option. If you are not support eligible you can run TREAT 3.3 in demo mode for 30 days. You can uninstall TREAT 3.3 and reinstall TREAT 3.2.5 at any time - your existing 3.2.5 license will still be active.



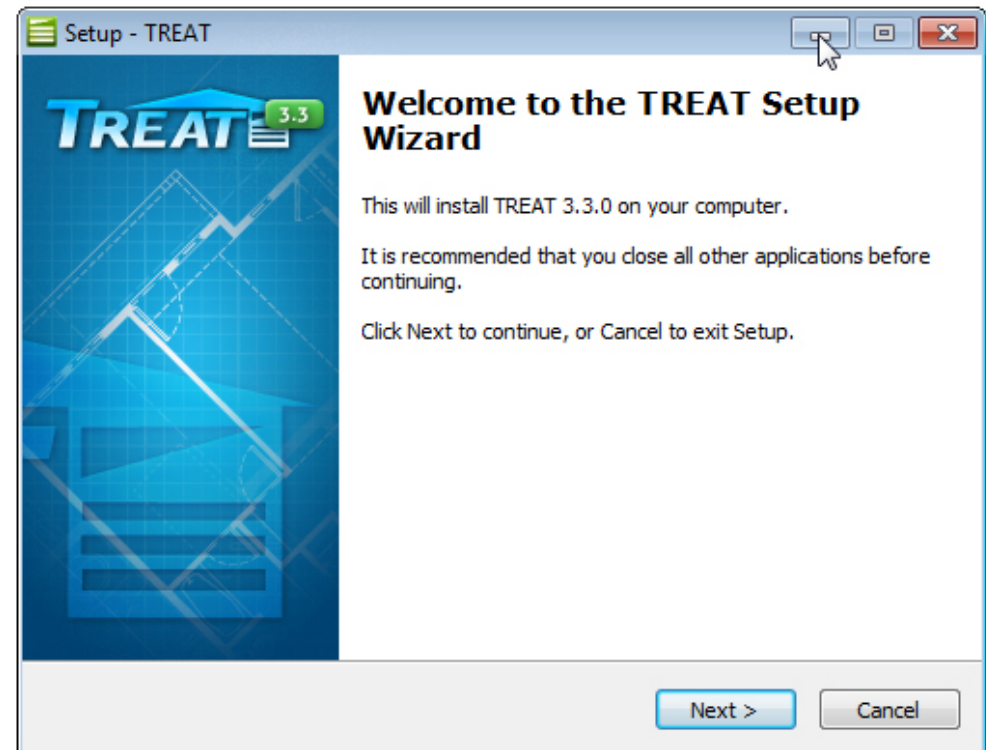
Thank you for downloading TREAT 3.3! We have heard your requests and are confident that the feature upgrades in TREAT 3.3 will significantly improve your experience using TREAT. This presentation is meant to give you a quick snapshot of what's new.

# TREAT 3.3

## Installation



- Double click the TREAT installer file to begin
- This will open the TREAT Setup Wizard
- Click Next



To purchase TREAT or download the installer file click [here](#)

- Accept the TREAT License Agreement to proceed
- Click Next

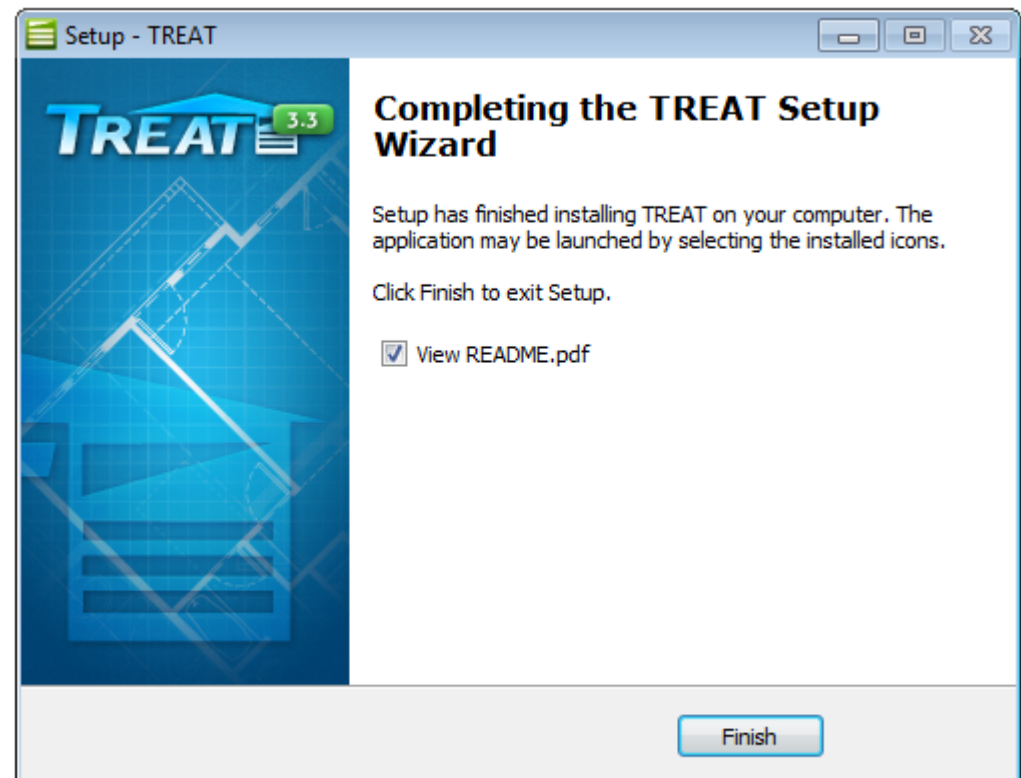






# Installation

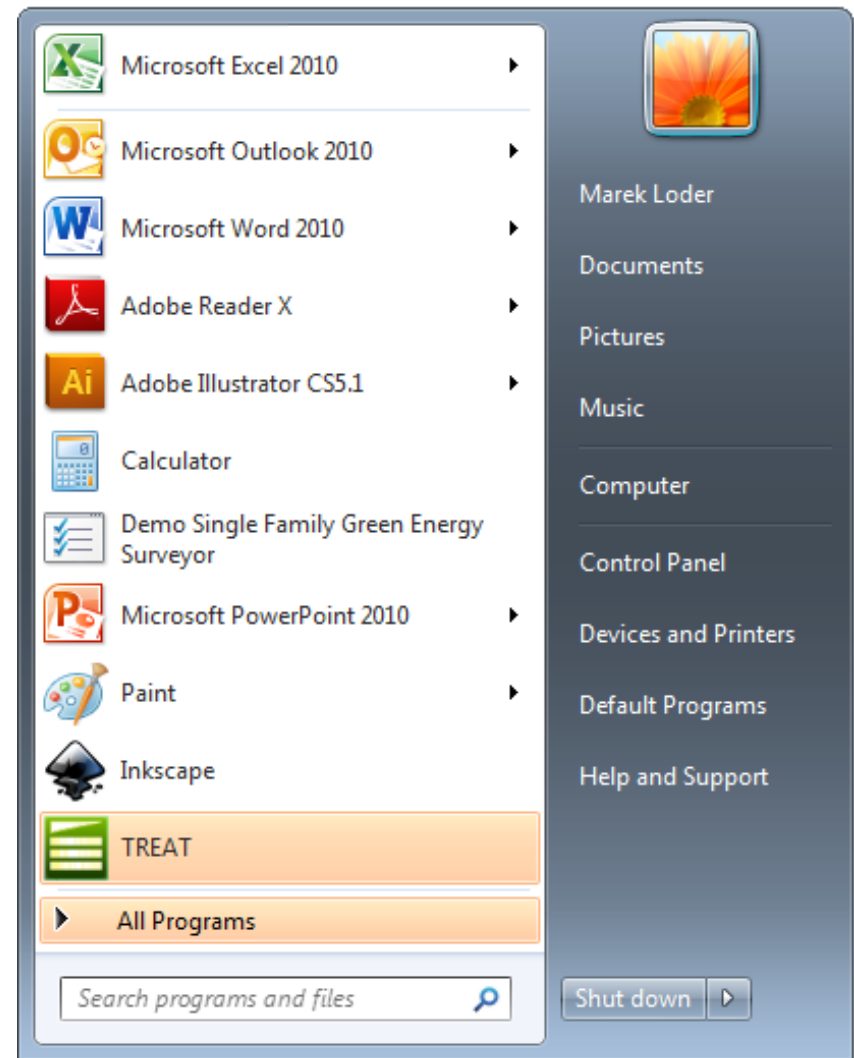
- Before you click Finish, make sure that the View README.pdf checkbox is selected so that a PDF of the new features will open automatically when the installation is complete



# TREAT 3.3

## Installation

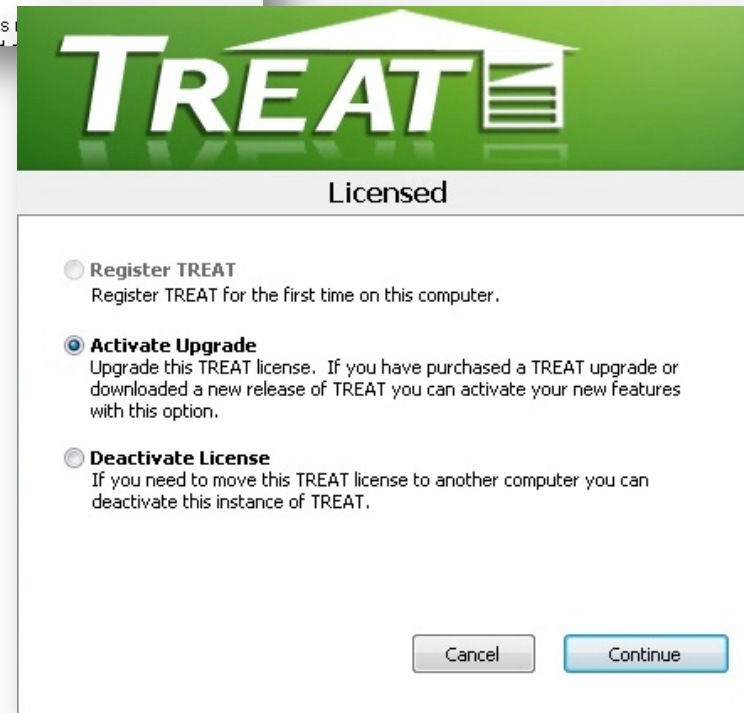
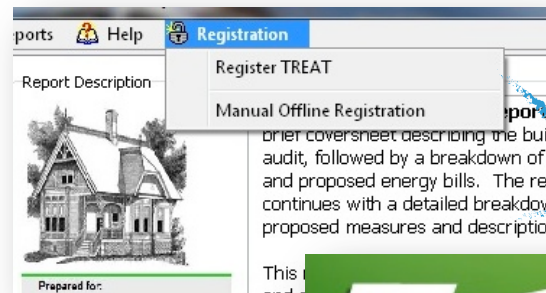
- TREAT will now show up in your start menu



# TREAT 3.3

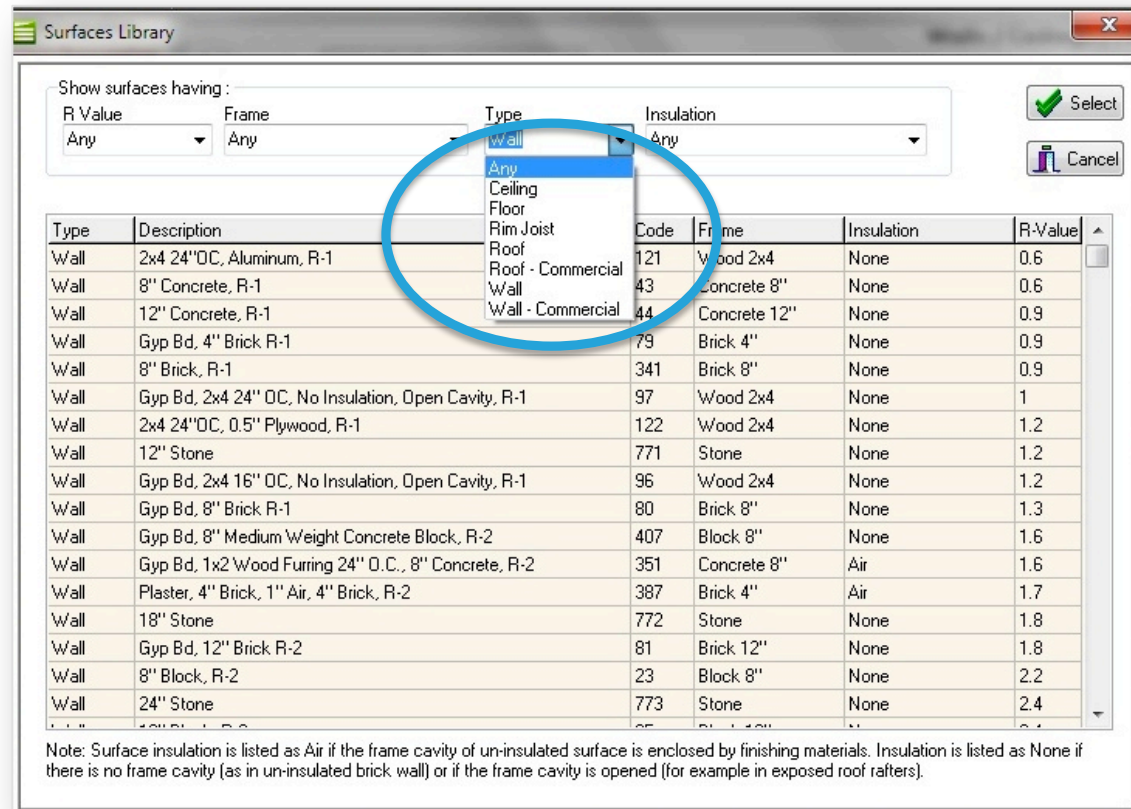
## Streamlined Registration Process

- TREAT now has a more automated and streamlined registration process.
- When you first install TREAT 3.3 on a machine TREAT will run in demo mode.
- If your license is still eligible for support you can activate TREAT 3.3 by choosing 'Register Treat' from the 'Registration' menu and selecting the 'Activate Upgrades' option.
- If you are not support eligible you can run TREAT 3.3 in demo mode for 30 days. You can uninstall TREAT 3.3 and reinstall TREAT 3.2.5 at any time - your existing 3.2.5 license will still be active.





- New commercial surfaces replace the deprecated surfaces.
- The new surfaces have better descriptions
- Constructions are taken from ASHRAE 2009 HOF.
- The surface library window search has been improved to make finding surfaces easier.





- You can now collect Solar DHW contribution for the base building

The screenshot shows the 'Hot Water Heaters' configuration window in the TREAT software. The 'Solar Fraction' field is highlighted with a blue circle. The interface includes a sidebar with navigation options, a main configuration area with various input fields, and a summary table at the bottom.

**Hot Water Heaters Configuration:**

- Type: Storage water heater
- Fuel: Electricity
- Location: Entire Trailer
- Tank Volume: 40
- Input, Btu/hr: 30000
- Supply Temp: 120
- Heaters: 1
- Additional Insulation: 0.0
- Solar Fraction: 50
- Year: 2007
- Thermal (Recovery) Efficiency, % (1): 99.00
- Energy Factor (1): 0.91

**Hot Water Piping Configuration:**

- Insulation R-Value: 3.0
- Total Area of Piping, SqFt: 4.0
- Recirculating System (2): No
- Recirculate Temp. Setting: [ ]
- Max Recirc. Time (Hrs/Day): [ ]
- Recirculation Pump HP: [ ]
- % of Pipes in Spaces:
  - Entire Trailer: 100
  - Skirt below trailer: 0
  - Total: 100

**Hot Water Demand Configuration:**

- Usage Adjustment Multiplier: 1
- Estimated Demand: 15 Gal/day per person, 46 Gal/day total
- Are Dishes Handwashed: No

**Summary Table:**

Calculate Model	Electricity			Kerosene (no. 1 fuel oil)		Fuel 3		Heating Slope Btu/F- day / sq.ft.	Heating Reference Temperature F.
	Heating, kWh /year	Cooling, kWh /year	Base Load, kWh /year	Heating, gallons /year	Base Load, gallons /year	Heating, Units/year	Base Load, Units/year		
Building Model	0.0	0.0	5,542.9	886.0	0.0			16.26	67
Billing Data	0.0	0.0	5,487.0	1,070.5	0.0			19.08	67
Percent Difference	NA	NA	1 %	21 %	NA			17.37 %	0%

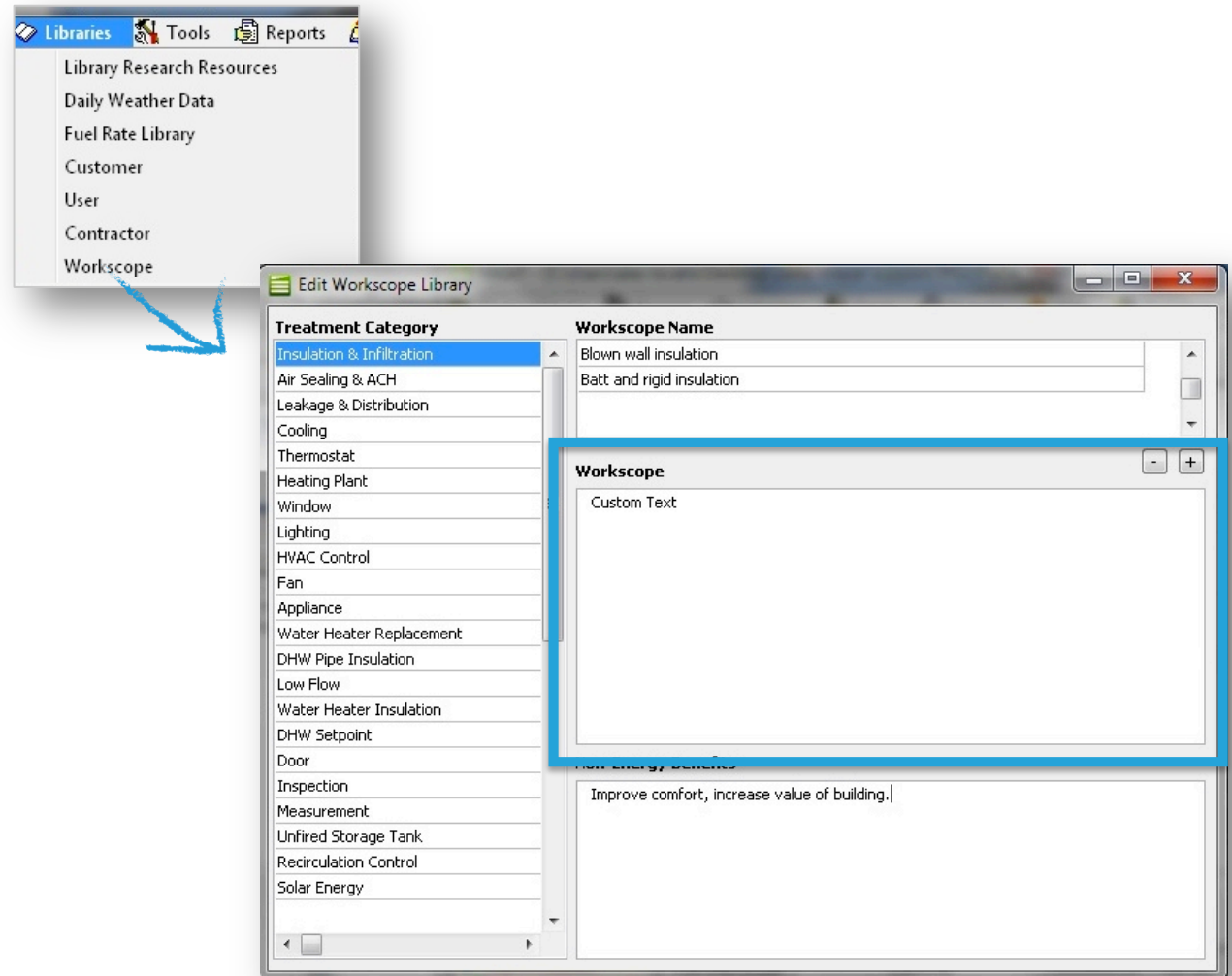
- New 'Renewable Energy' improvement supports adding solar DHW equipment to a package

The screenshot displays the TREAT software interface. A central dialog box titled "Improvement Wizard Step 2 - Renewable Energy" is open, allowing configuration for a new improvement. The dialog includes fields for "Improvement Name" (set to "Renewable Energy 1"), "Total Cost, \$" (set to "1.00"), and "Improvement Life, Years" (set to "10.00"). Below these, there are input fields for "Solar Fraction of DHW Energy" with "Proposed" set to "0.50" and "Existing" set to "0.00". Buttons for "Edit Workspace", "Done", and "Cancel" are at the bottom of the dialog.

The background interface shows a table of improvements with columns: Improvement Name, Cost, Annual Usage, Annual Savings, Payback Years, and SIR. Below the table are buttons for "Add Improvement", "Edit Improvement", and "Delete". At the bottom of the window is a summary table:

Calculate Model	Electricity			Kerosene (no. 1 fuel oil)		Fuel 3		More Fuels	
Calculate Billing	Heating, kWh /year	Cooling, kWh /year	Base Load, kWh /year	Heating, gallons /year	Base Load, gallons /year	Heating, Units/year	Base Load, Units/year	Heating Slope Btu/F-day / sq.ft.	Heating Reference Temperature F.
Building Model	0.0	0.0	5,542.9	886.0	0.0			16.26	67
Billing Data	0.0	0.0	5,487.0	1,070.5	0.0			19.08	67
Percent Difference	NA	NA	1 %	21 %	NA			17.37 %	0%

- Improvement workscopes are now taken from a library of editable workscope descriptions







# TREAT 3.3

## Report System Improvements

- You can now export reports to Microsoft Word format
- There are also four new report templates that have been added to the reports library:
  - Home Performance Report
  - Package Financial Comparison
  - Energy Savings Plan
  - Weatherization SIR Independent and Interacted

Report Description

The **Base Load** report provides information on energy consumption by appliances, domestic hot water and lighting in the selected building model.

Packages (choose 1)

Base Building

Calculate Model	Electricity			Kerosene (no. 1 fuel)			More Fuels		
Calculate Billing	Heating, kWh /year	Cooling, kWh /year	Base Load, kWh /year	Heating, gallons /year	Base Load, gallons /year	Heating, units/yr	Heating, units/yr	Heating, units/yr	Heating, units/yr
Building Model	0.0	0.0	5,542.9	886.0	0.0			16.26	67
Billing Data	0.0	0.0	5,487.0	1,070.5	0.0			19.08	67
Percent Difference	NA	NA	1 %	21 %	NA			17.37 %	0%